



GMT MONTHLY MEMBERSHIP PROGRESS REPORT

Results as of: 5/31/2020

Multiple District 38

LOCATION: NEBRASKA

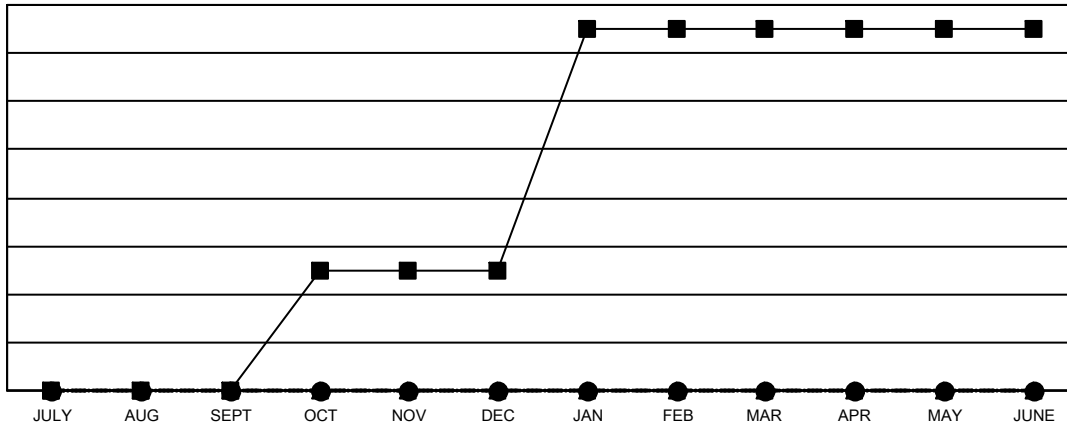
GMT: OPEN

GMT CA 1

Clubs			
RESULTS FOR 2019-2020			
QUARTER	NEW CLUB GOAL	NEW CLUBS	DROPPED CLUBS
JULY/AUG/SEPT	0	0	0
OCT/NOV/DEC	1	0	0
JAN/FEB/MAR	2	0	0
APR/MAY/JUNE	0	0	0

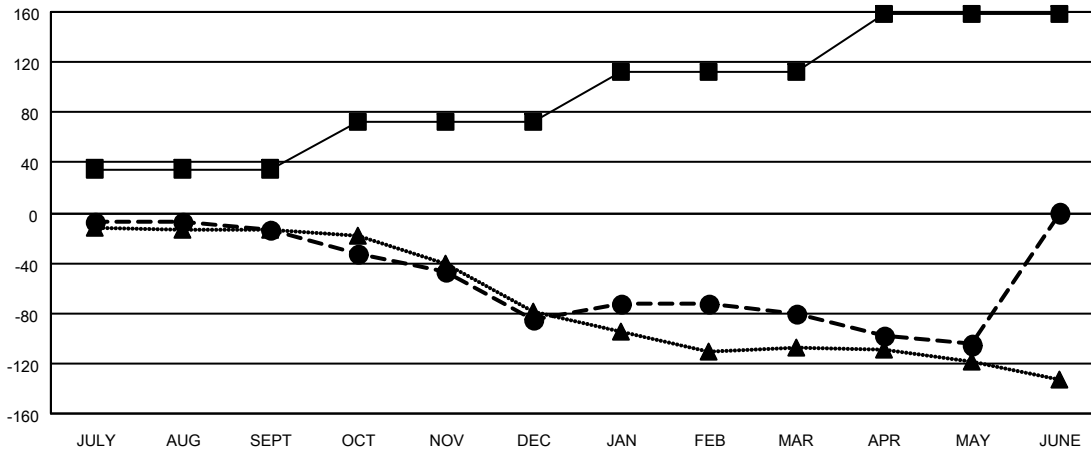
Members			
RESULTS FOR 2019-2020			
QUARTER	MEMBER GROWTH NET GOAL	MEMBER GROWTH ACTUAL	DROPPED MEMBERS ACTUAL (including transfers)
JULY/AUG/SEPT	35	41	49
OCT/NOV/DEC	37	31	95
JAN/FEB/MAR	40	46	37
APR/MAY/JUNE	46	9	32

GOALS AND ACTUAL NEW CLUBS CUMULATIVE



- - CURRENT YEAR GOALS FOR NEW CLUBS
- - CURRENT YEAR ACTUAL NEW CLUBS
- ▲ - LAST YEAR ACTUAL NEW CLUBS

GOALS AND ACTUAL MEMBERS CUMULATIVE



- - MEMBER GROWTH NET GOAL
- - MEMBER GROWTH ACTUAL
- ▲ - LAST YEAR MEMBERSHIP ACTUAL

DROPPED CLUBS: 0	54 CLUBS OF 128 ADDED 1 OR MORE NEW MEMBERS	GENDER DISTRIBUTION MALE 2,363 (73.48%) FEMALE 853 (26.52%)
DROPPED MEMBERS DECEASED 38 CLUB CANCELLED 0 OTHER 175 TOTAL 213	CLICK HERE FOR CUMULATIVE MEMBERSHIP DATA	TOTAL FAMILY UNIT MEMBERS 689 FAMILY MEMBERS PAYING HALF DUES 349